

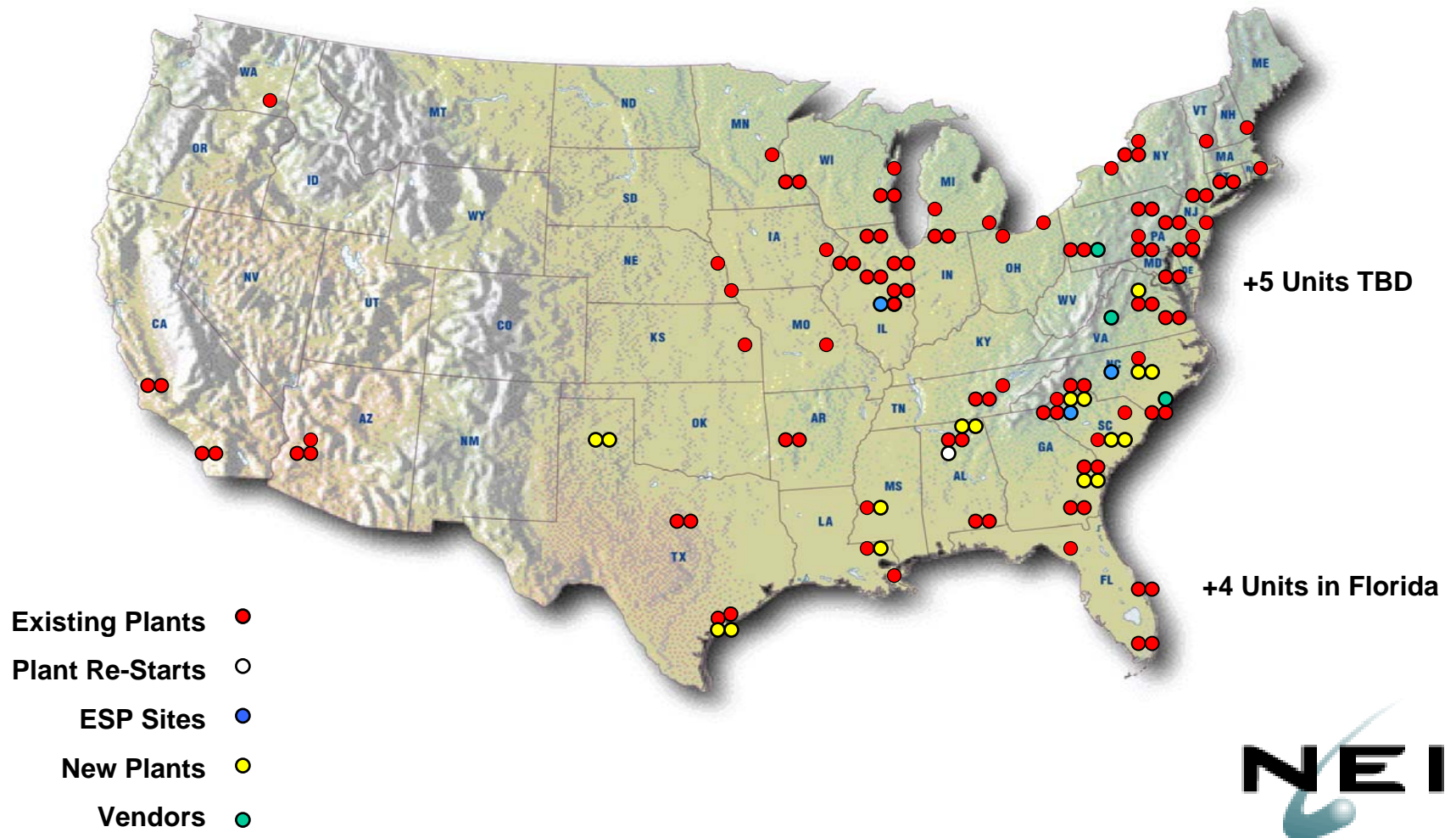
Nuclear Energy Workforce and Staffing

Leslie Barbour

September 14, 2006



Potential for New Nuclear



Nuclear Generation 5-Year Attrition

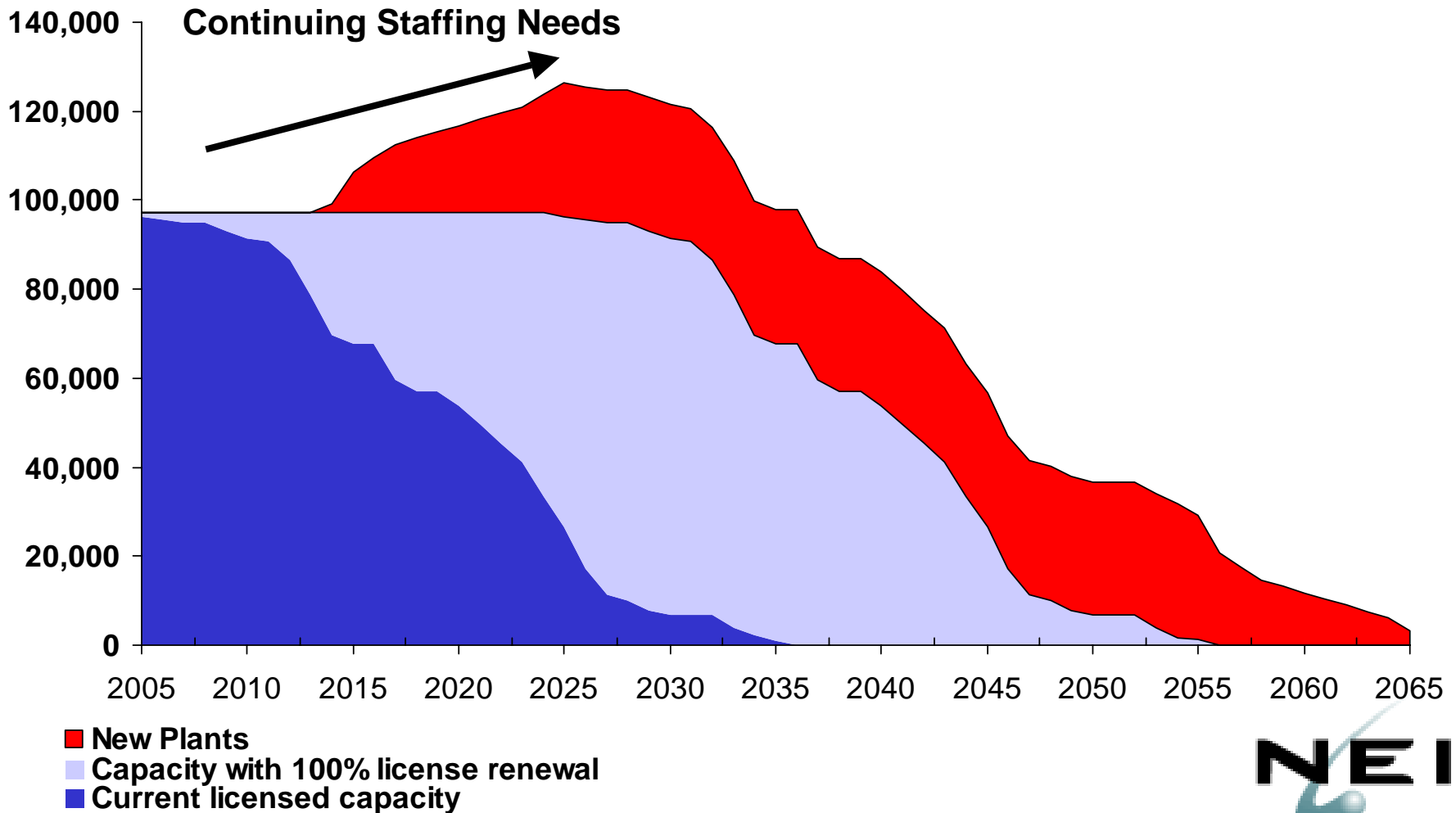


1. *Potential Retirees are defined as employees that will be older than 53 with 25+ years of service, or older than 63 with 20 years of service, or older than 67 within the next five years.*

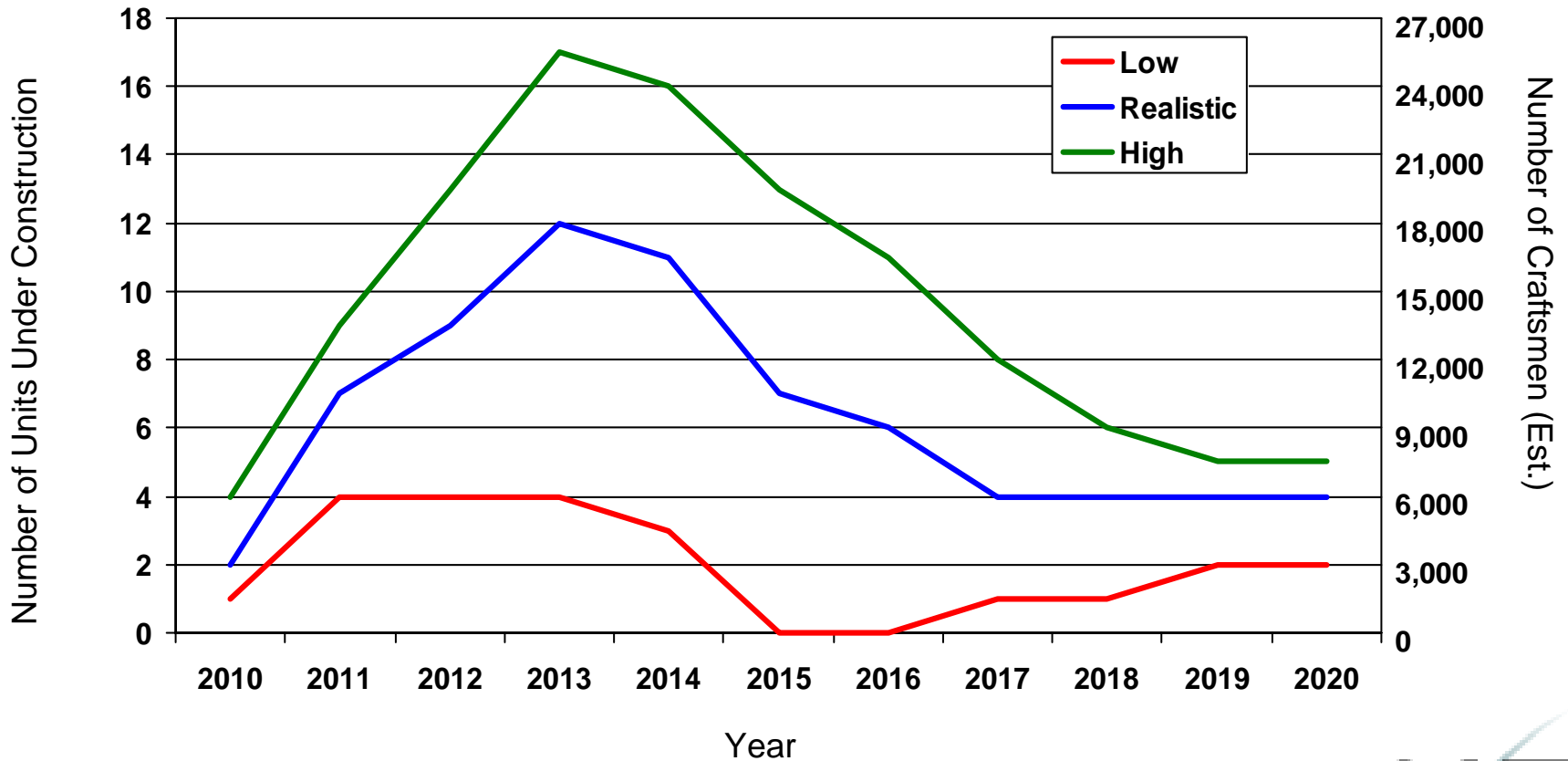
Source: 2005 NEI Pipeline Survey



US Nuclear Generating Capacity License Renewal and New Plants



Estimated* New Nuclear Plant Construction



*Indicates provisional estimates



Workforce Infrastructure: Professional and Craft

- Operating workforce needs new generation of engineers and technicians
- Recent studies predict severe shortages of construction craft workers in a number of skill areas.
- Recommendations to increase labor supply:
 - NRC
 - IAEA
 - Congress



NEI Activities

- Quantifying the challenge through periodic staffing studies and assessments
- Partnering with EEI on Center for Energy Workforce Development (CEWD)
- Managing Department of Labor on Energy and Construction workforce
- Developing improved recruiting materials and a toolkit for employee retention
- Sharing good practices for knowledge retention
- Encouraging development of workforce programs to support the industry



Upcoming events

- ANS has convened a working group
- DOE will convene a workshop October 24-25 in Chicago to re-evaluate the activities conducted within the University program